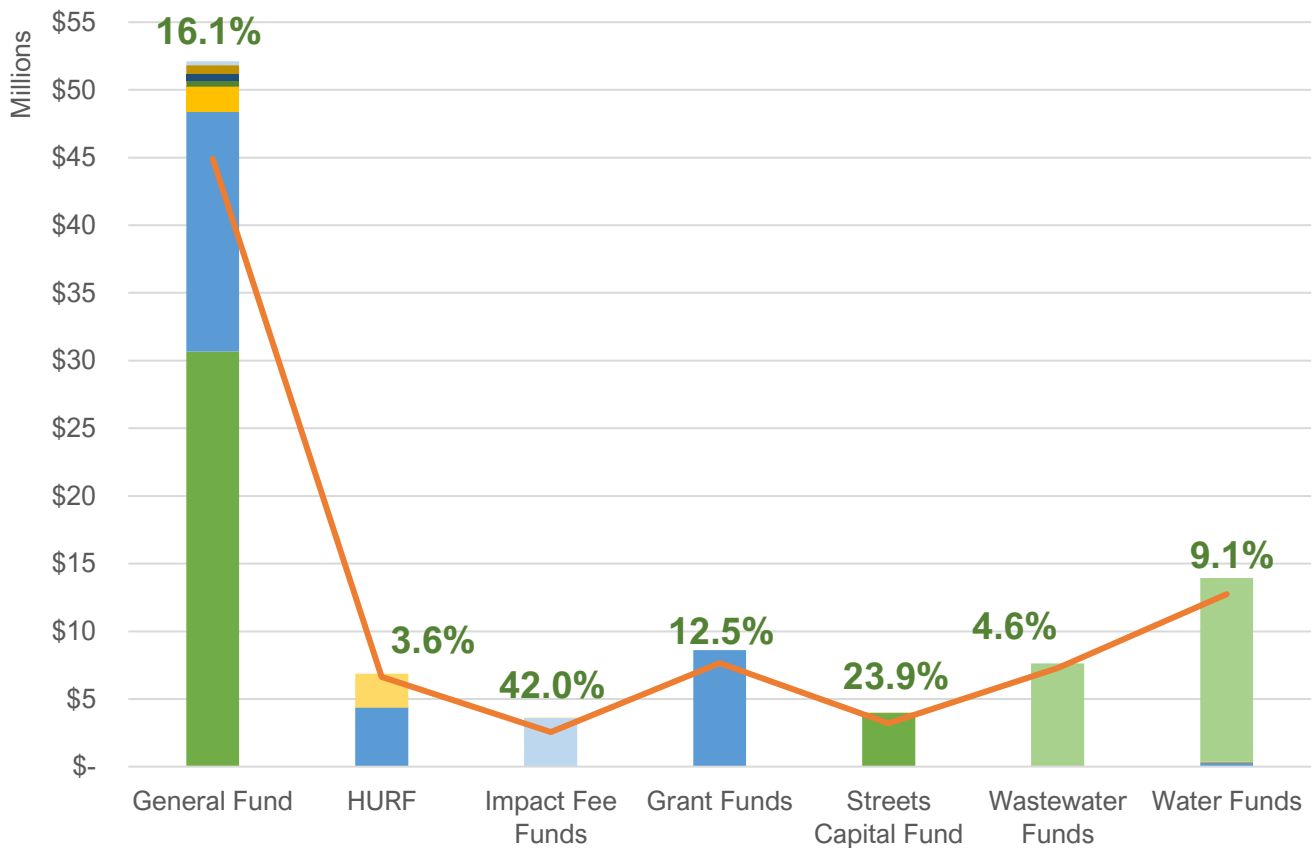
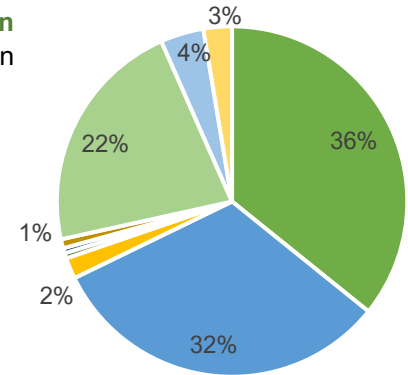
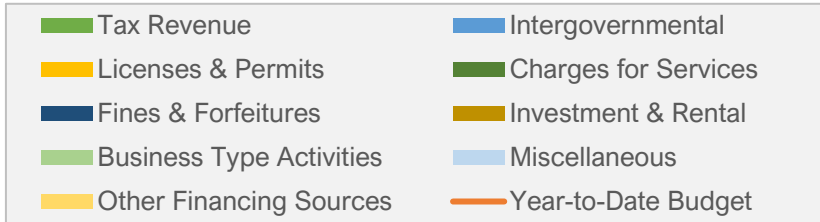




REVENUES

The graph below demonstrates the fiscal year-to-date types of revenue by fund as compared to the year-to-date budget. The percentage above each column indicates the performance of the fund to budget with **green** indicating more revenues and **red** indicating less revenues than budgeted.



This section indicates the performance of major revenue types with on track revenues indicated by **green** icons and revenues below budget indicated by **red** icons.



Transaction Privilege Tax

23.1%

More than Budget



Intergovernmental Revenues

4.1%

More than Budget



Business Type Activities

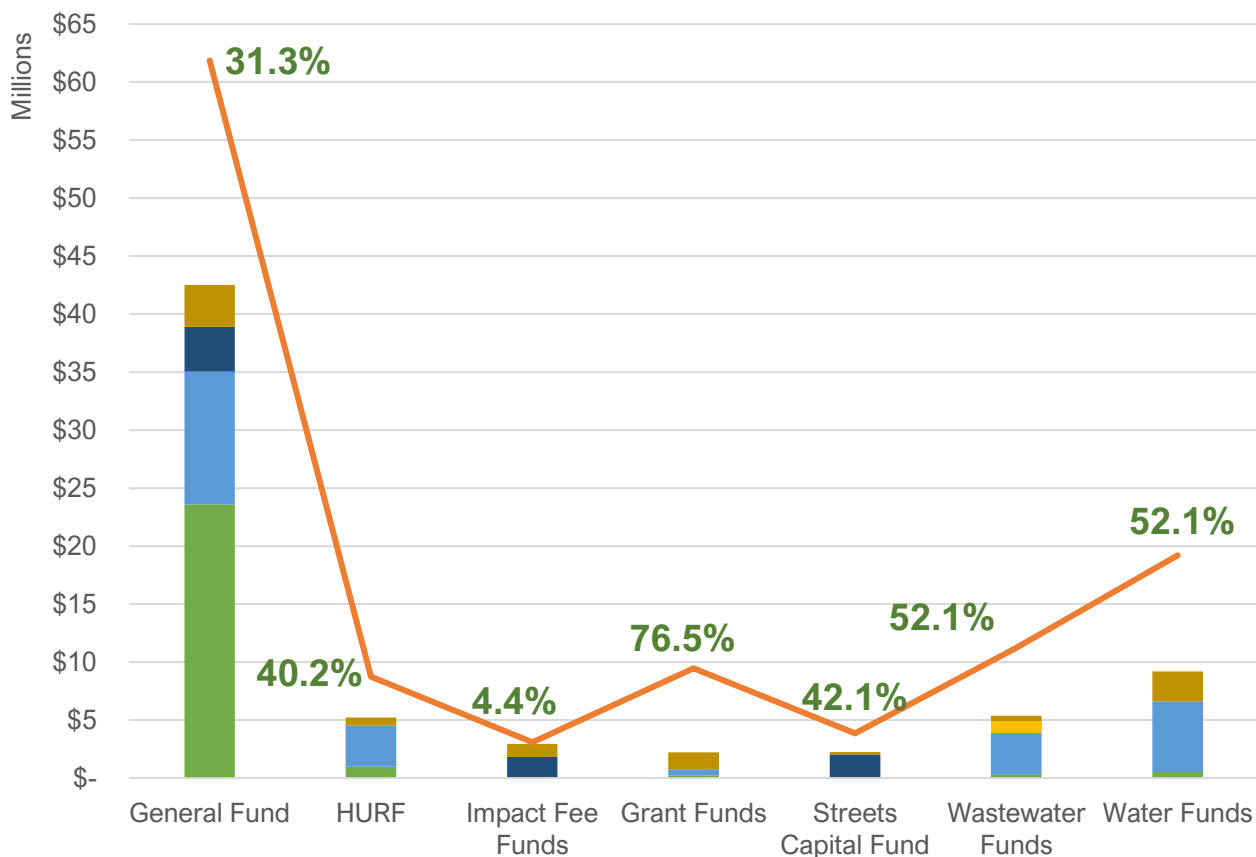
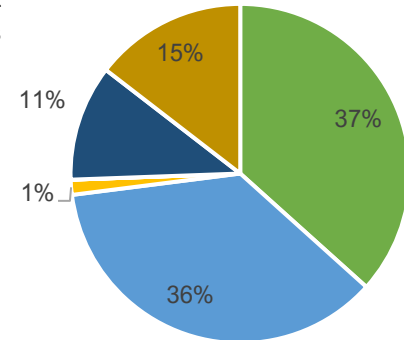
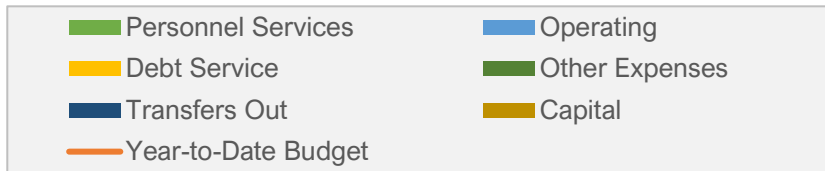
12.7%

More than Budget



EXPENSES

The graph below depicts the fiscal year-to-date types of expenses by fund as compared to the fiscal year-to-date budget. The percentage above each column indicates the performance of the fund to budget with **green** indicating less expenses and **red** indicating more expenses than budgeted.



This section indicates the performance of major expense types with on track expenses indicated by **green** icons and expenses exceeding the budget indicated by **red** icons. Expenses exceeding the budget are explained.



Personnel Expenses
6.9%

Less than Budget



Operating Expenses
32.6%

Less than Budget



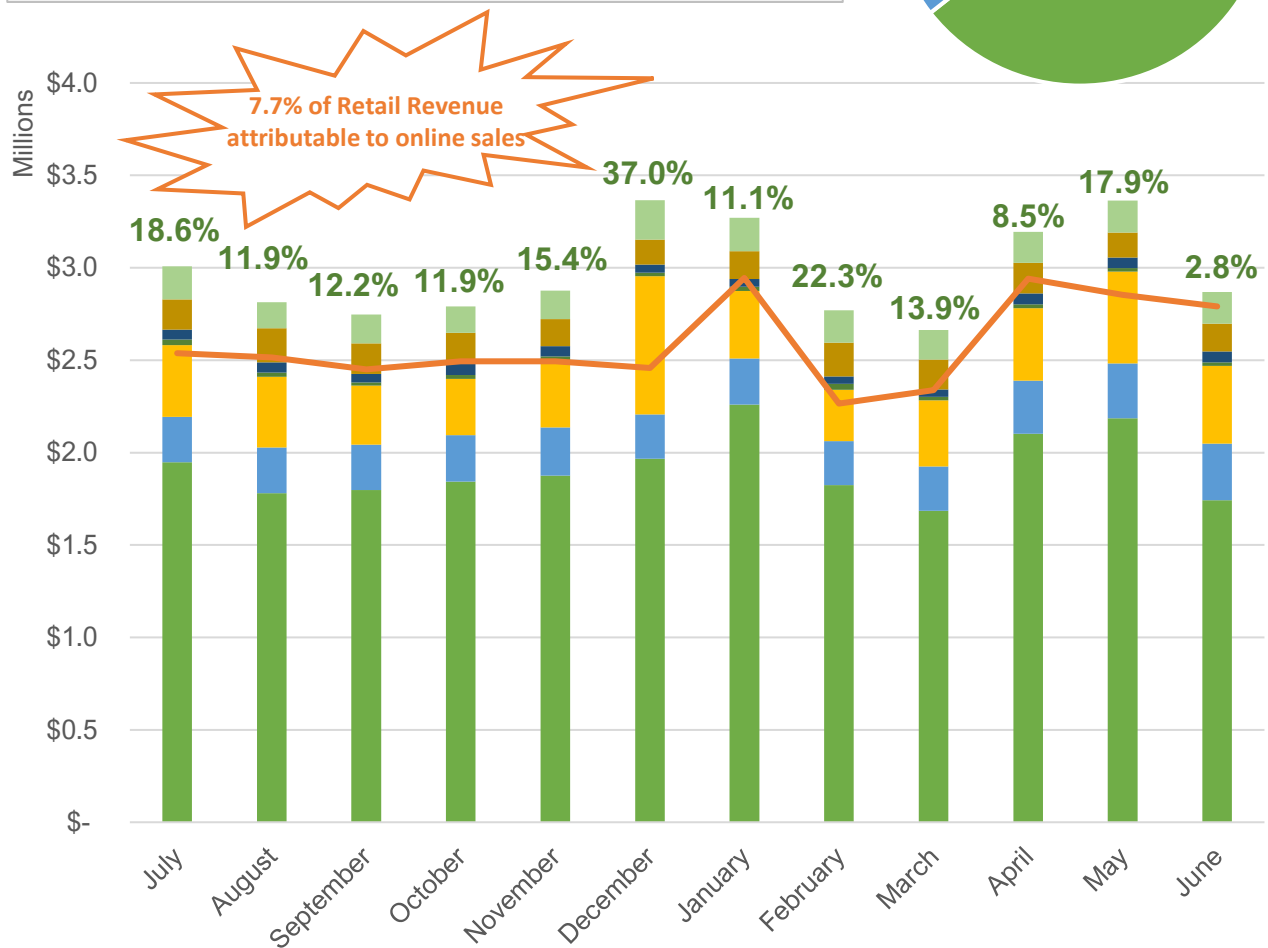
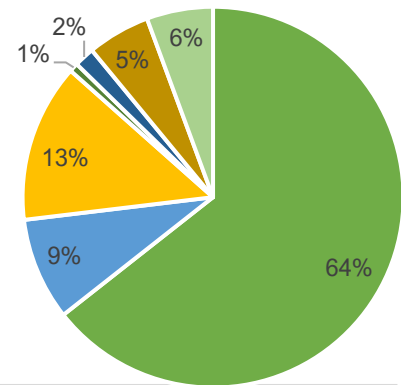
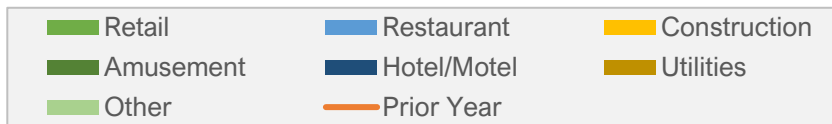
Capital Improvements
72.0%

Less than Budget

TRANSACTION PRIVILEGE TAX



The graph below shows the transaction privilege tax revenues by month and category as compared to the prior fiscal year. The percentage above each column indicates the performance of the month to the same period in the prior year with **green** indicating more revenues and **red** indicating less revenues than the prior year. The pie chart shows the year-to-date tax by category.



This section indicates the performance of major transaction privilege tax category revenues with on track revenues indicated by **green** icons and revenues below target indicated by **red** icons.



Retail

10.1%

More than Prior Year



Restaurant

19.8%

More than Prior Year



Construction

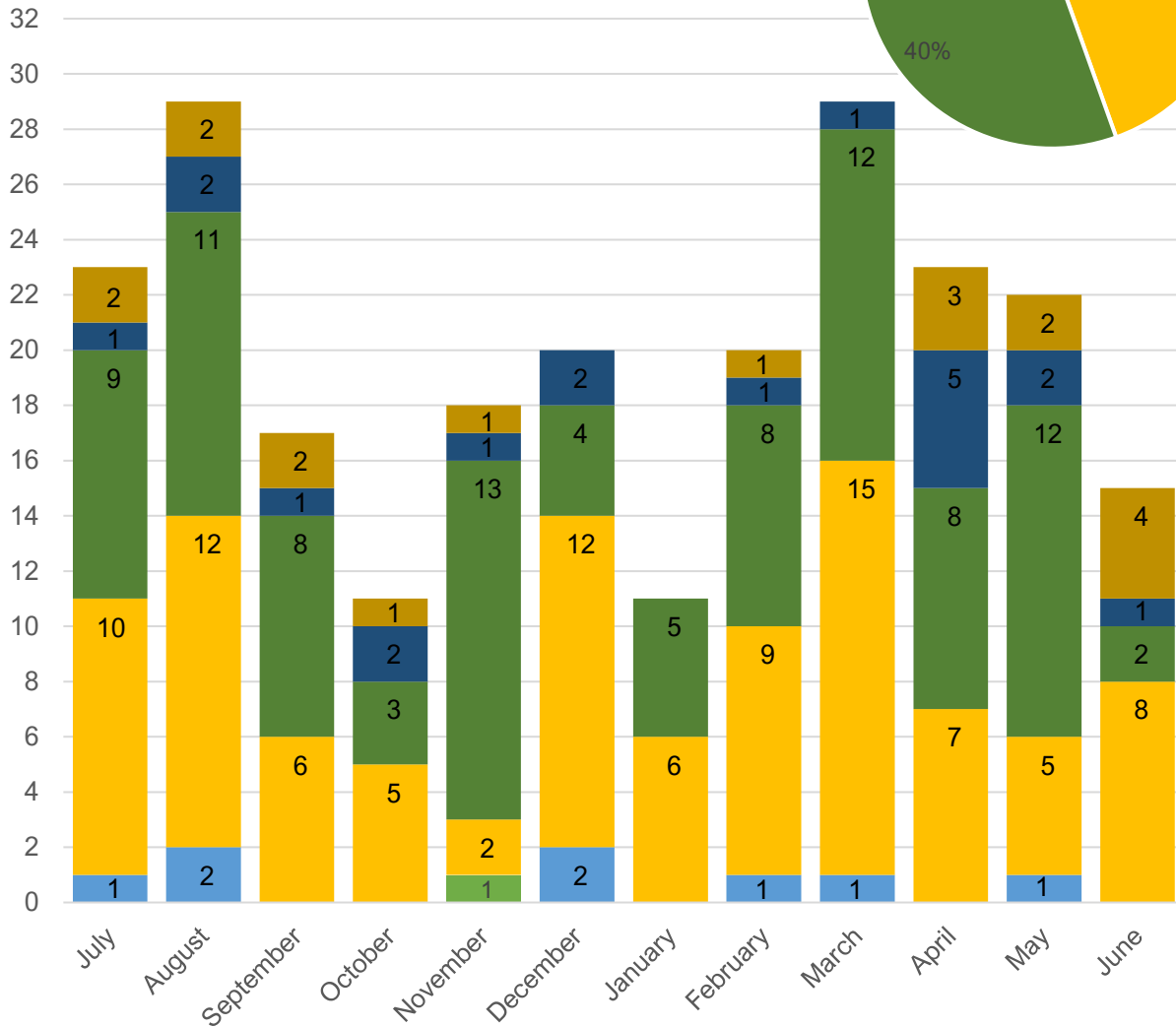
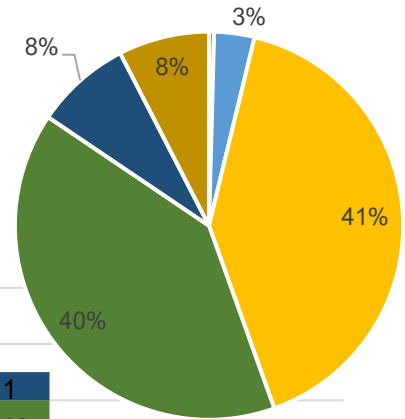
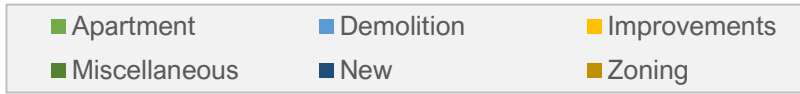
40.2%

More than Prior Year

COMMERCIAL PERMIT ACTIVITY



The graph below shows the types of commercial permits by month with the numbers in each column indicating the number of permits by type. The pie chart shows the fiscal year-to-date permits by type.



This section indicates the fiscal year-to-date key permit activity data.



Commercial Permits
238



Commercial Permit Revenues
\$270,263

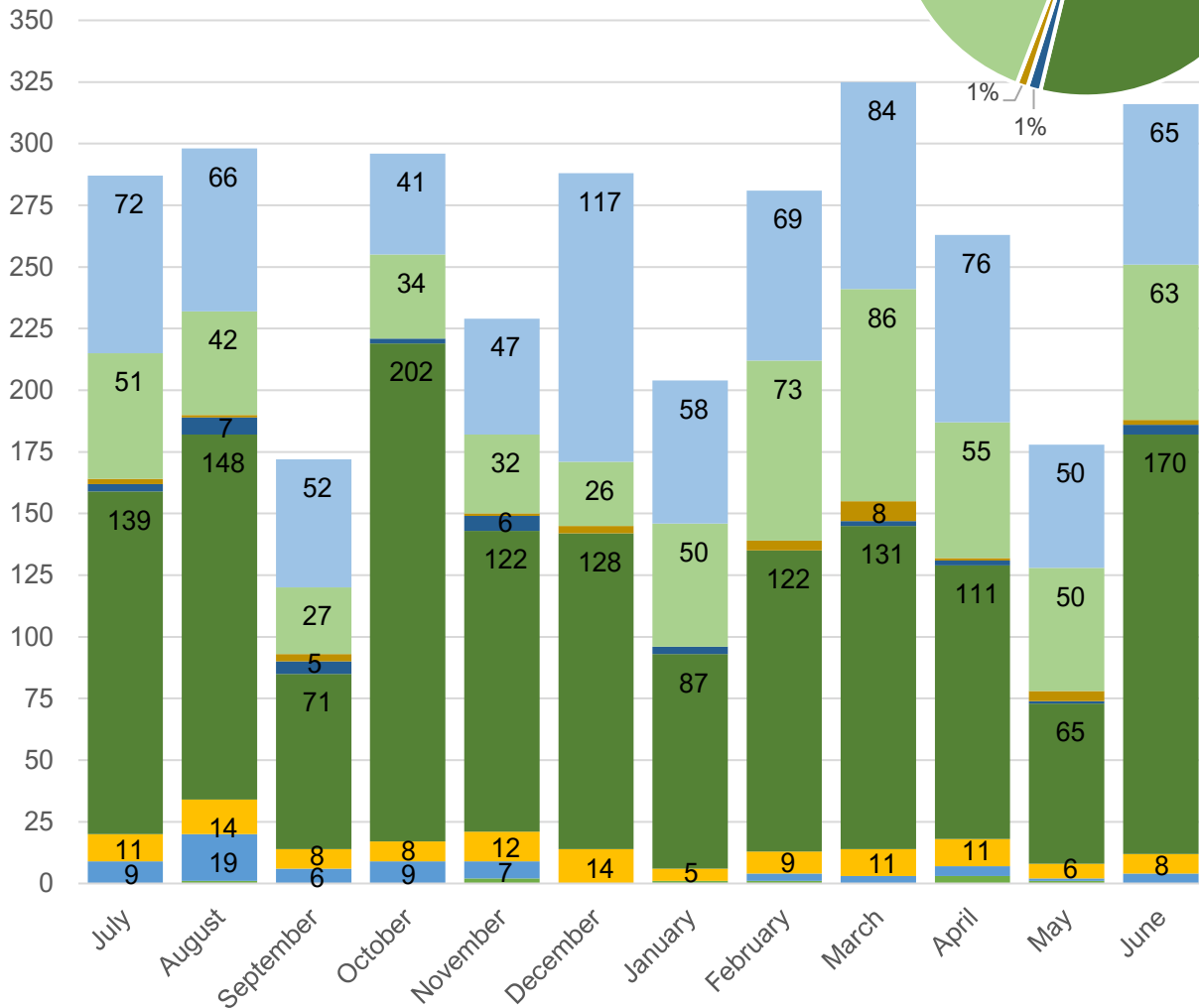
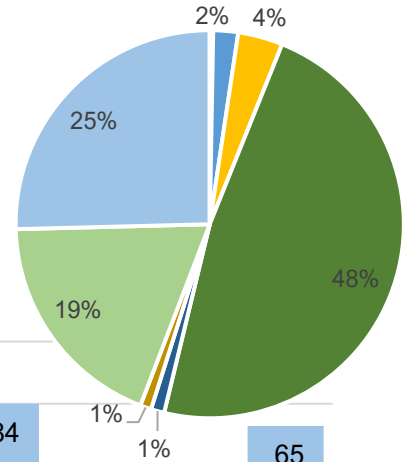
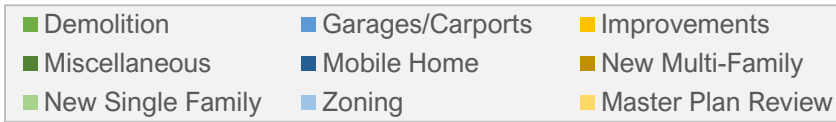


Commercial Valuations
\$69,660,466

RESIDENTIAL PERMIT ACTIVITY



The graph below shows the types of residential permits by month with the numbers in each column indicating the number of permits by type (excluding those with fewer than 5 permits). The pie chart shows the fiscal year-to-date permits by type.



This section indicates the fiscal year-to-date key permit activity data.



New Single Family Permits
589



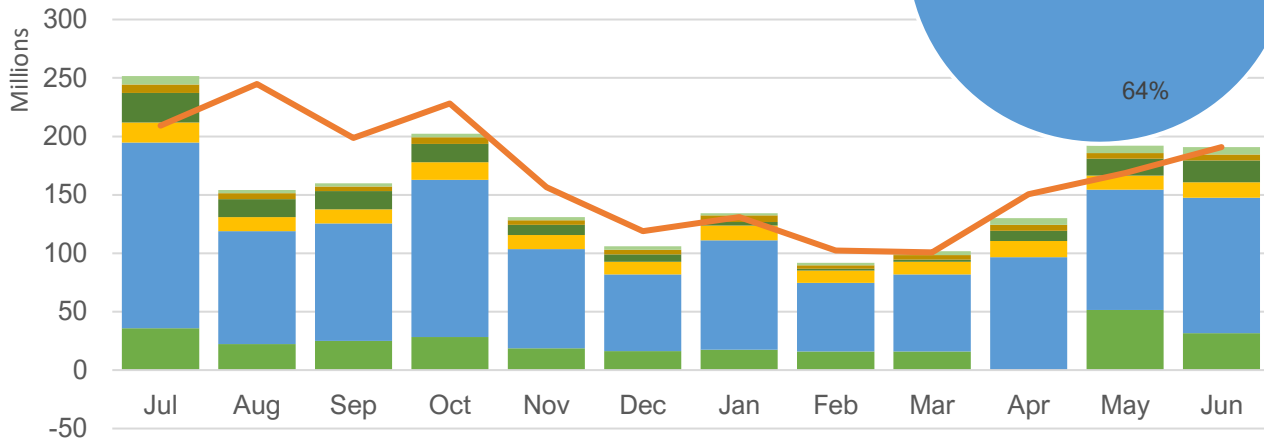
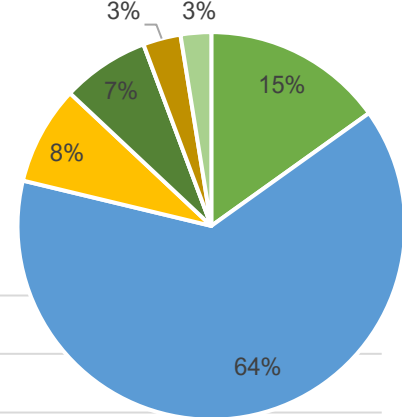
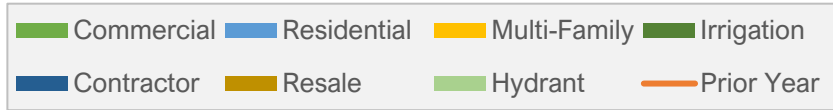
Residential Permit Revenues
\$1,381,514



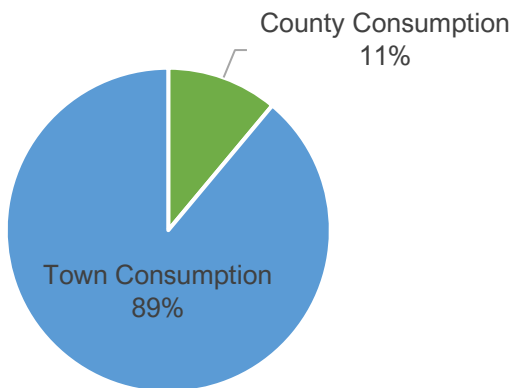
New Multi-Family Permits
29

WATER MANAGEMENT

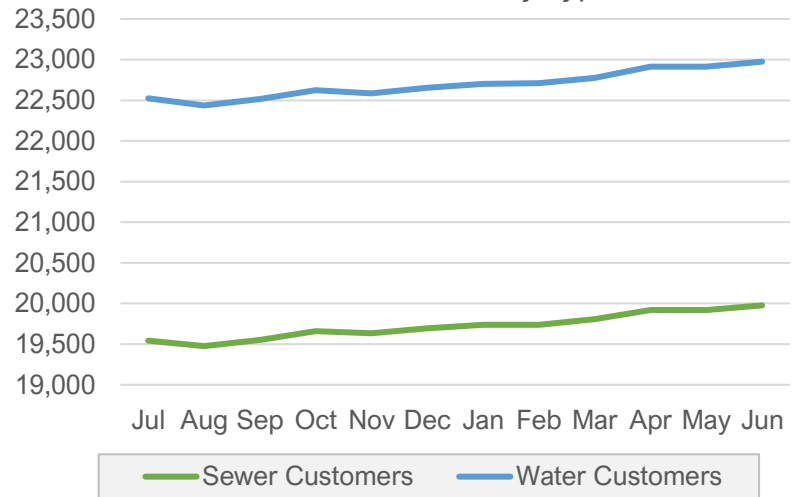
The graph below shows the types of water usage in millions of gallons by month as compared to the prior fiscal year. The pie chart shows the fiscal year-to-date water use by type.



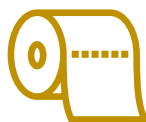
Year-to-date Consumption By Location



Active Customers By Type



This section indicates key water data for current month.



New Sewer Connections

43



New Water Connections

43



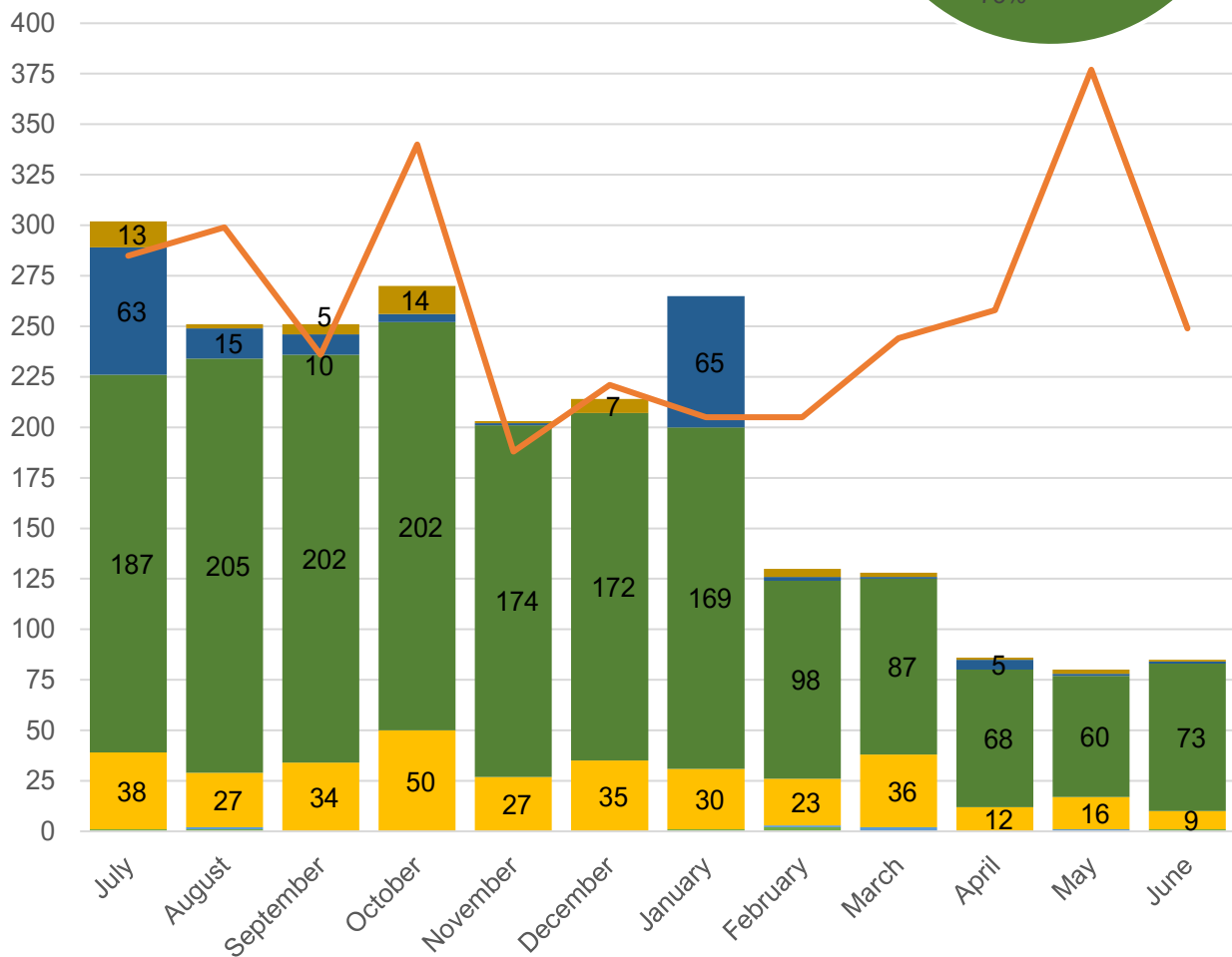
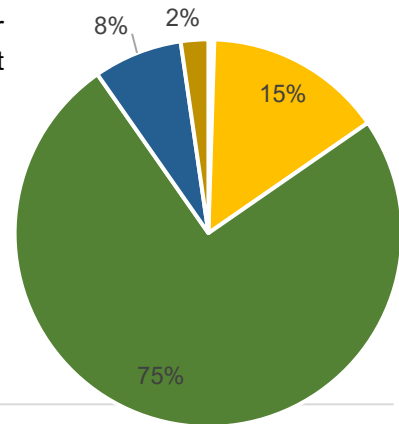
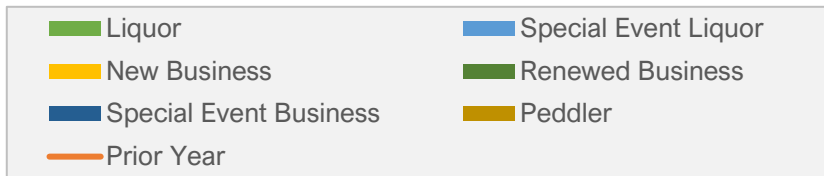
Gallons of Water Billed

190,841,000

BUSINESS LICENSE ACTIVITY



The graph below shows the types of licenses by month as compared to the prior fiscal year. The numbers in each column indicate the number by type (excluding those with fewer than 5 licenses). The pie chart shows the fiscal year-to-date licenses by type.



This section indicates the fiscal year-to-date key business license activity data.



New Business Licenses
337



New Liquor Licenses
6



Active Business Licenses
2,034

NEW BUSINESSES

The businesses listed below by type are new businesses or those that have had a change of ownership in the current month. Only businesses that are located in the Town limits of Prescott Valley are listed; home occupancy and out-of-town businesses are excluded.



PROFESSIONAL SERVICES

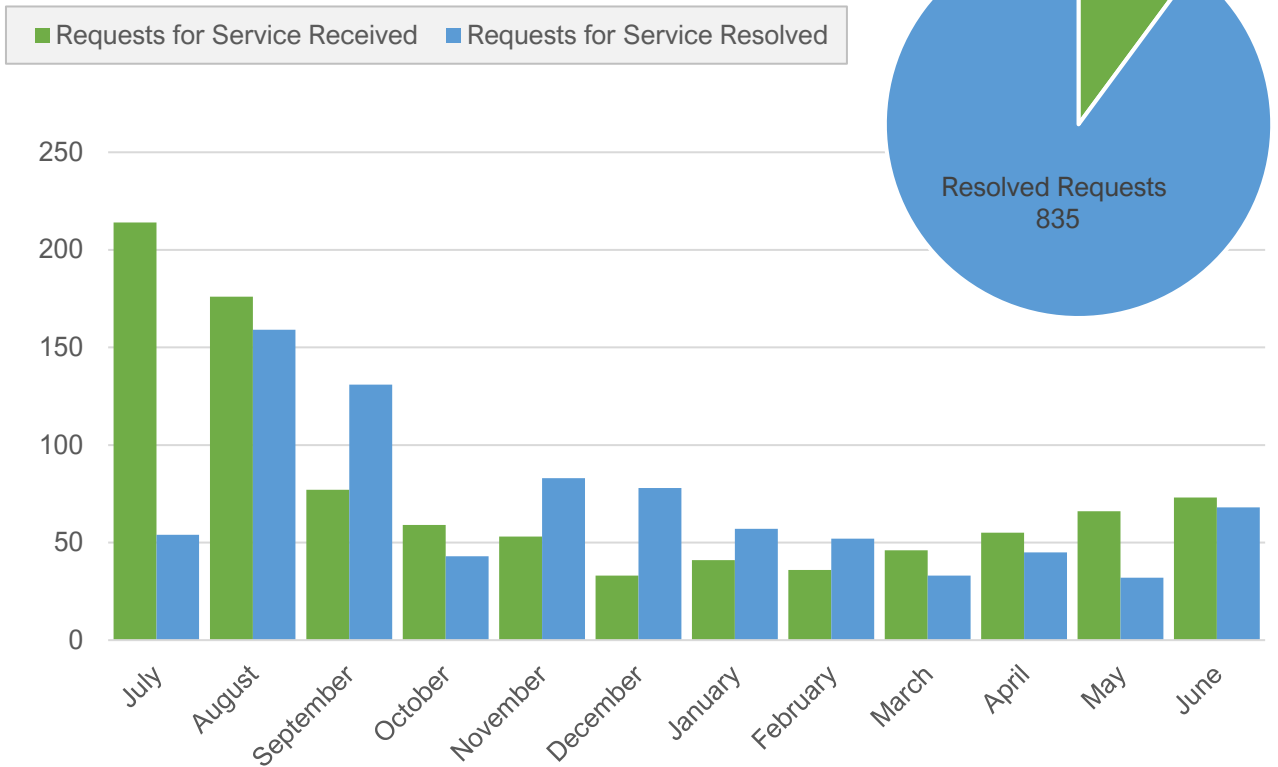
BUSINESS NAME	BUSINESS LOCATION
HERTIG APPLIED ENGINEERING LLC	8333 E PECOS DR UNIT D PRESCOTT VALLEY, AZ 86314
OCEAN DREAMS BEAUTY CO.	8028 AZ HWY 69 SUITE 201 PRESCOTT VALLEY, AZ 86314





PUBLIC WORKS ACTIVITY

The graph below shows the received and resolved requests for service by month. The pie chart shows the fiscal year-to-date service requests received with **green** indicating unresolved requests and **blue** indicating resolved requests.



This section indicates the fiscal year-to-date key public works data.



Fleet Work Orders

742



Gallons of Fuel Pumped

97,961



Facilities Work Requests

1,191



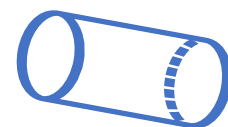
Chip Seal Laid (Square Yards)

1,021,392



Right-of-Way Permits Issued

142

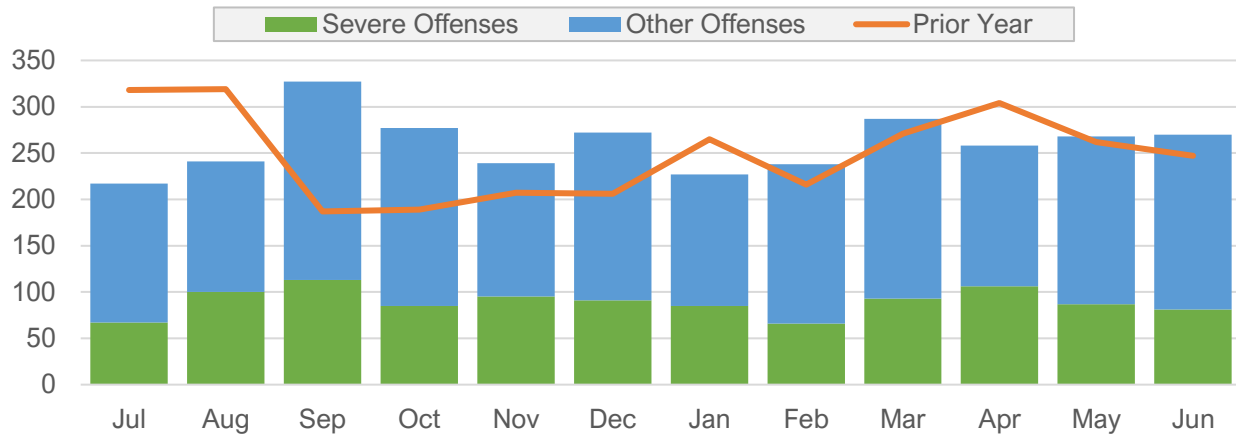


Culvert Site Visits

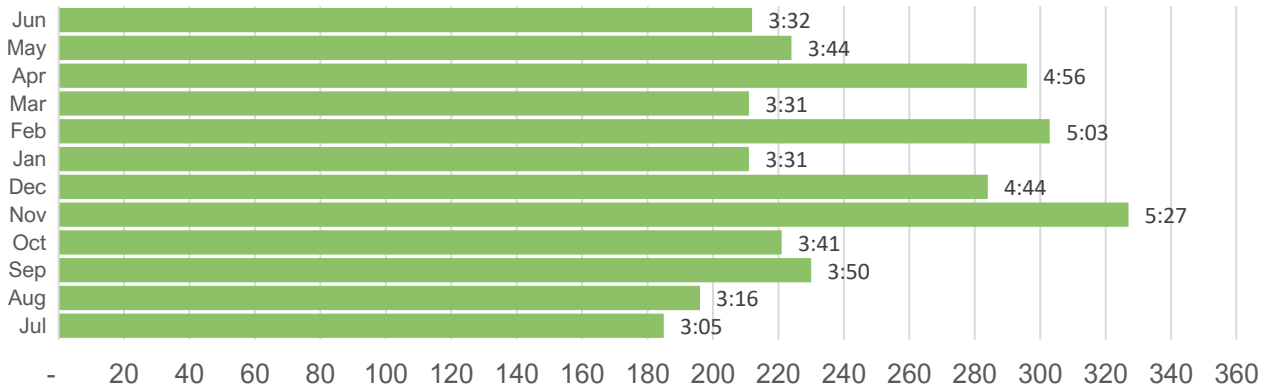
90

POLICE ACTIVITY

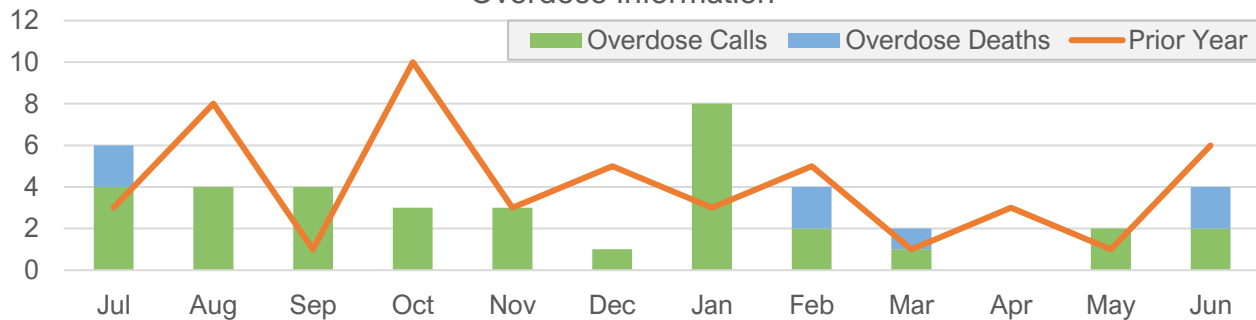
The graph below shows severe and other offenses by month as compared to the prior fiscal year.



Average Response Time (in seconds)



Overdose Information



This section indicates the fiscal year-to-date key police data.



Traffic Citations

11,379



Accidents

608

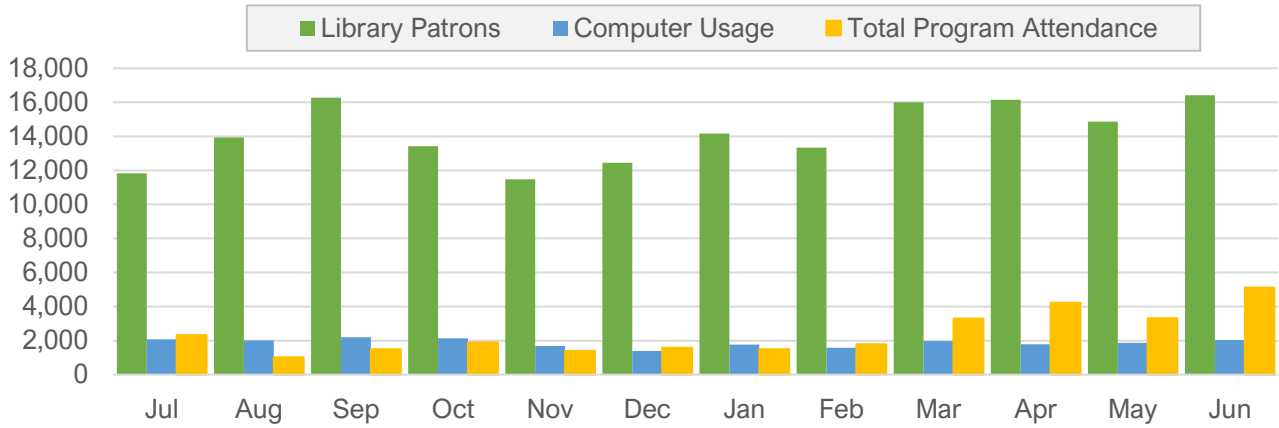


Narcan Saves by PVPD Officers

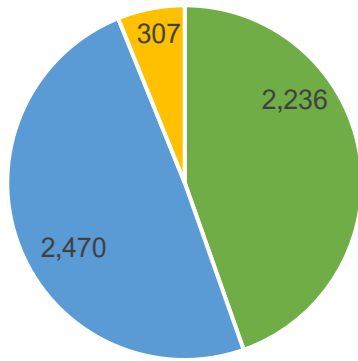
10

LIBRARY ACTIVITY

The graph below shows library attendance by month and type of use.

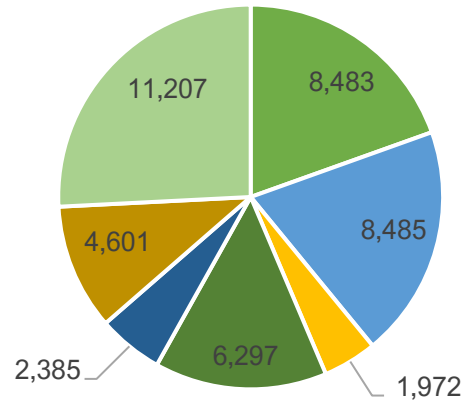


Program Attendance - Current Month



Legend: Adult (Green), Children (Blue), Young Adult (Yellow)

Circulation Activity - Current Month



Legend: Books-Adult (Green), Books-Children (Blue), Materials-Young Adult (Yellow), AV-Children (Dark Blue), AV-Adult (Dark Green), Renewals (Light Green)

This section indicates the key library data for current month.



New Members
339



Materials Added
309



Reference Inquiries
1,648



Days Open
30



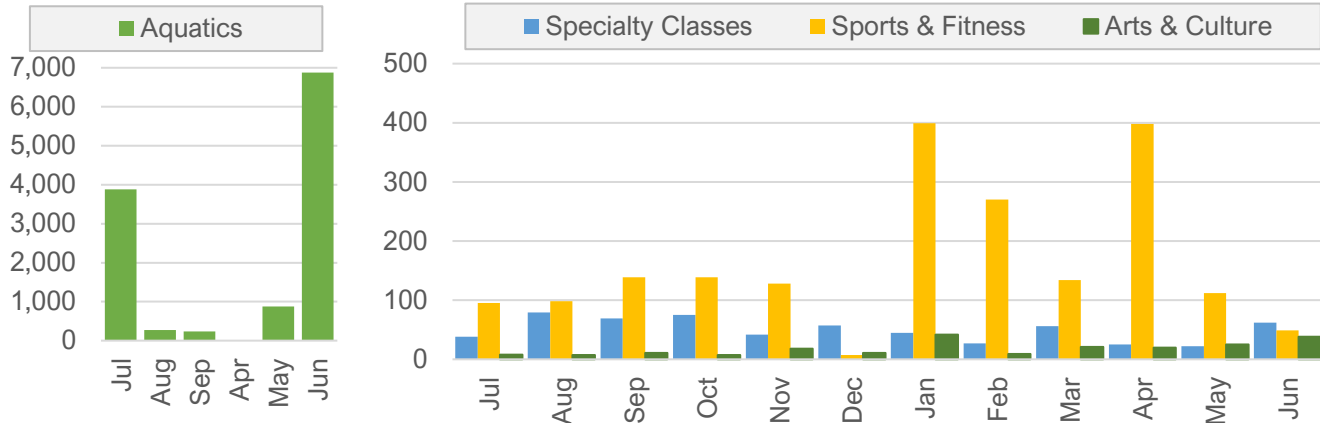
Hours Open
252



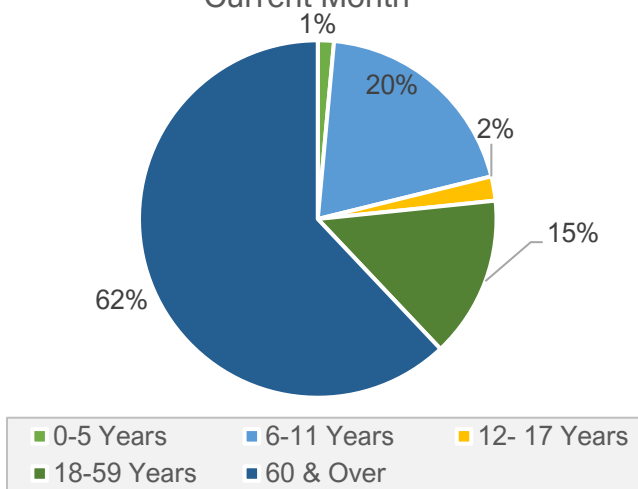
Drive Thru Visitors
458

PARKS ACTIVITY

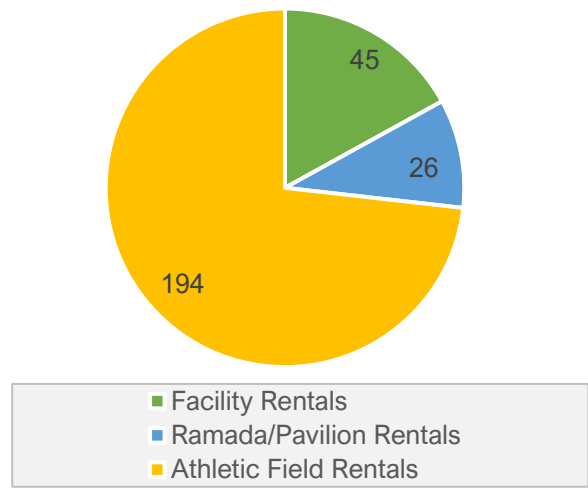
The bar graphs below shows participation by month for aquatics, specialty classes, sports & fitness, and arts & culture.



Participation Age Demographics - Current Month



Facility Rentals - Current Month



This section indicates the key parks and recreation data for current month.



Special Event Attendance
1,075



Volunteer Hours
15



Donations Received
\$0



Trees Planted
0



Art Exhibitions
36

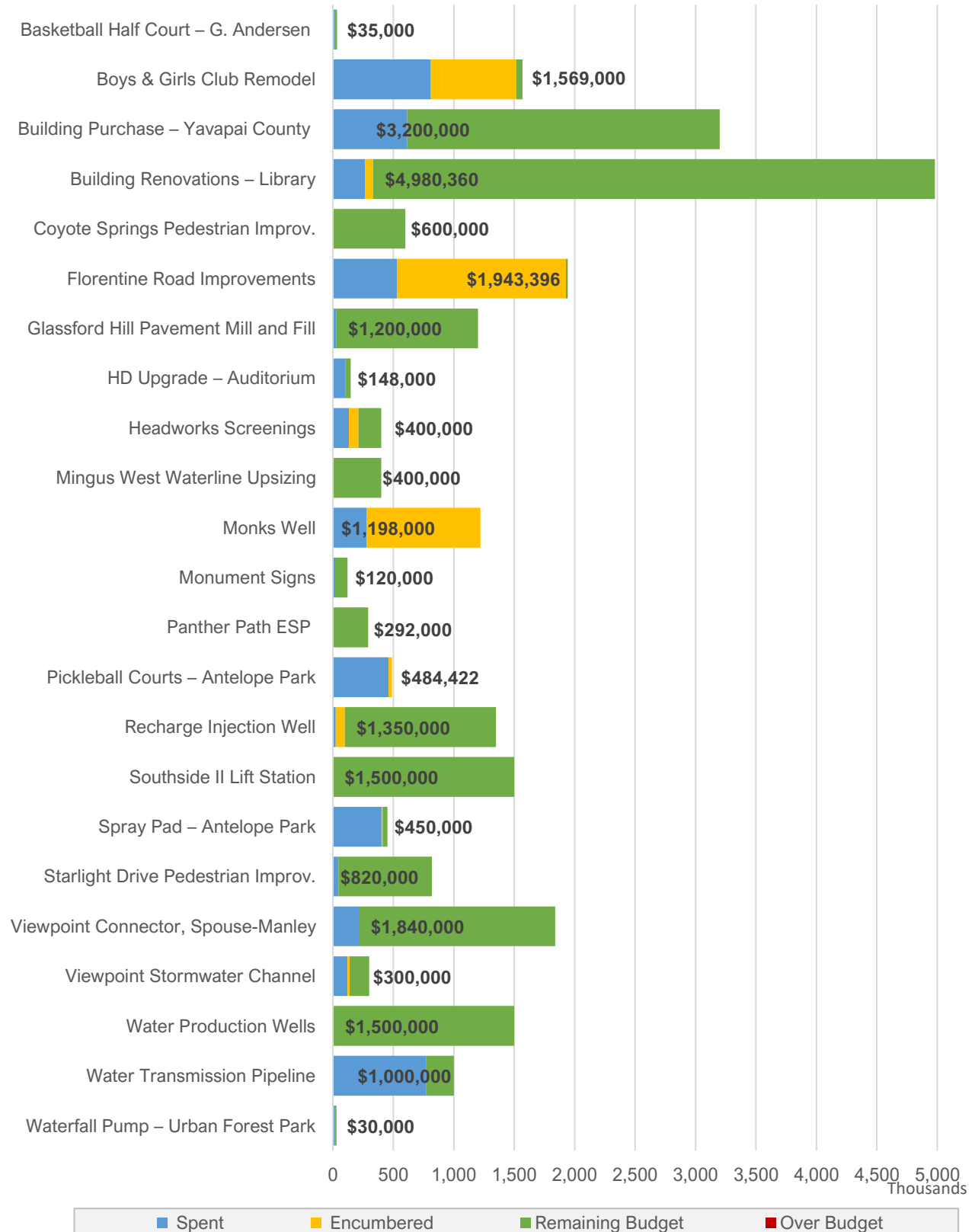


Vandalism Cost
\$2,600

CAPITAL PROJECT PROGRESS



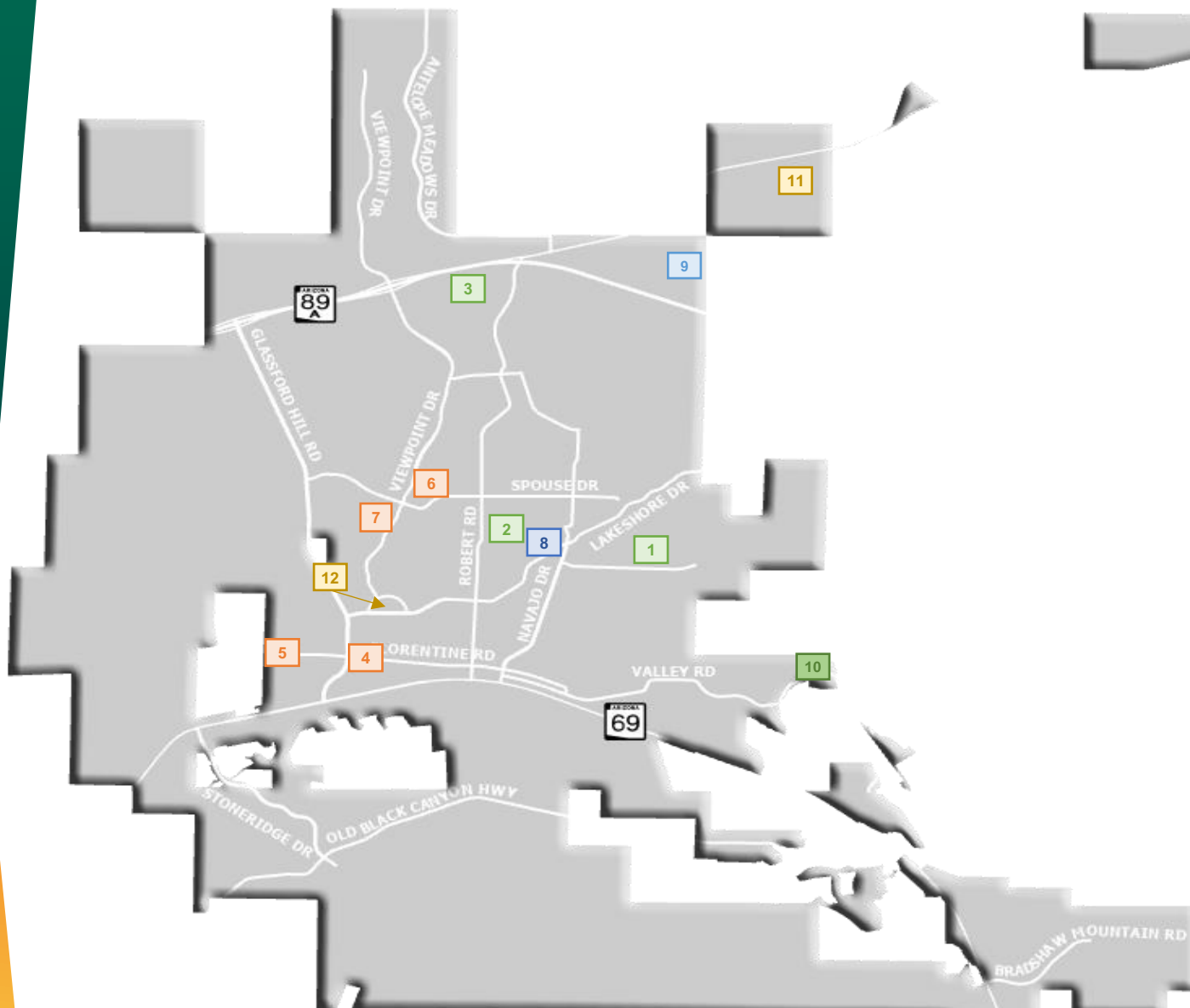
The graph below shows the status of capital improvement projects (excluding machinery/equipment purchases and projects below \$20,000). **Blue** represents the amount spent in the current year, **yellow** is the encumbered amount, **green** is the remaining budget, and **red** is the amount over budget. The **bold** numbers represent the total budget by project.



CAPITAL PROJECT LOCATIONS



The map below shows the locations of current in-progress projects.



Parks Projects

- 1 Basketball Half Court – G. Andersen
Ramada – G. Andersen Park
- 2 Boys & Girls Club Remodel
- 3 Spray Pad/Pickleball Courts – Antelope Park

Streets Projects

- 4 Florentine Road Improvements
- 5 Starlight Drive Pedestrian Improv.
- 6 Viewpoint Connector, Spouse-Manley
- 7 Viewpoint Stormwater Channel

Water Resources Projects

- 8 Recharge Injection Well

Water System Projects

- 9 Monks Well

Wastewater System Projects

- 10 Headworks Screenings

Town Facility Projects

- 11 Building Purchase – Yavapai County
- 12 Building Renovations – Library